

### 322 Lever Operated Outside Access Device

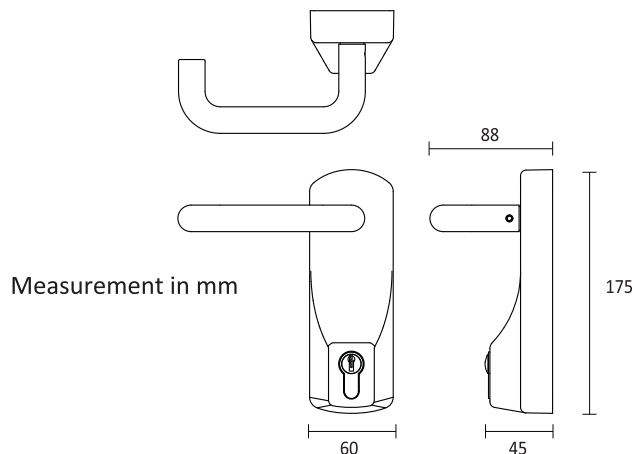


The 322 is supplied with 3 keys and has the advantage that a master keyed 45mm Euro profile cylinder can be used. Suitable for use with the Exidor 200 & 300 series, the 322 offers access from the outside of the door.

- Non-handed
- meets the dimensional requirements of BS8300 and approved Document "M" (DDA)
- Lever is supplied with special shear screw designed to break under excessive force
- Surface mounted on the outside of the door using three concealed machine screws
- Supplied as standard for doors up to 55mm thick
- Longer spindles available on request for door thicknesses over 55mm

#### Performance

When locked, the lever is fixed in the horizontal position and the shear screw is designed to break under excessive force to prevent unauthorized entry. When unlocked, the lever, spindle and mechanism engage allowing the shoots, latch or Pullman latches to be withdrawn from the outside. The lever remains engaged until the mechanism is re-locks.



322EC



299



304

### 299 Dogging Device

For use with Exidor panic bolt and Pullman latch ranges, a dogging device is available as an accessory. The dogging device allows the bolts to be withheld in the retracted position ensuring the automatic top trip catch or Pullman latch do not engage when the door is closed.

### 304 Alarm Unit

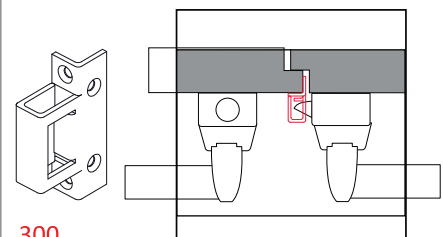
For use with the Exidor panic bolt and Pullman latch ranges, the alarm is activated when the panic device is operated or an attempt is made to remove the cover, and de-activated by a key. The unit is powered by a 9V battery.

### 300 Double Rebated Door Keep

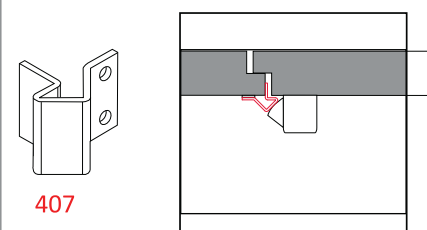
- Used for rebated double doors for the Exidor 296 push bar
- Mild steel, Power coated finish.

### 407 Horizontal Pullman Latch Keep

- Used with Exidor horizontal Pullman latches for both flush fitting doors/-frames and on double rebated door applications.
- Mild steel, Electro galvanised finish.



300



407

Electronic Latch Retraction

SINGLE POINT LOCKING

**TB450** ELR Touch Bar Panic Latch for Doors Up To 900mm Wide

BS EN 1125



MADE IN  
BRITAIN

Classification No.	3	7	6	0	1	3	2	2	B	A
EN 1125 : 2008										

The Exidor TB450 with electronic latch retraction are surface mounted touch bar panic latches for wooden or steel, single double door applications. The TB450 is suitable for doors up to 900mm wide. Integration with the buildings access control system ensures that security and access restrictions are maintained. Simply pushing the touch bar always provides safe and speedy exit in panic situations, whilst the patented lip prevents accidental jamming of the touch bar. Combining smooth stylish lines with the excellence of British engineering ensures they're elegant enough for use in the most prestigious buildings with integrated interior.

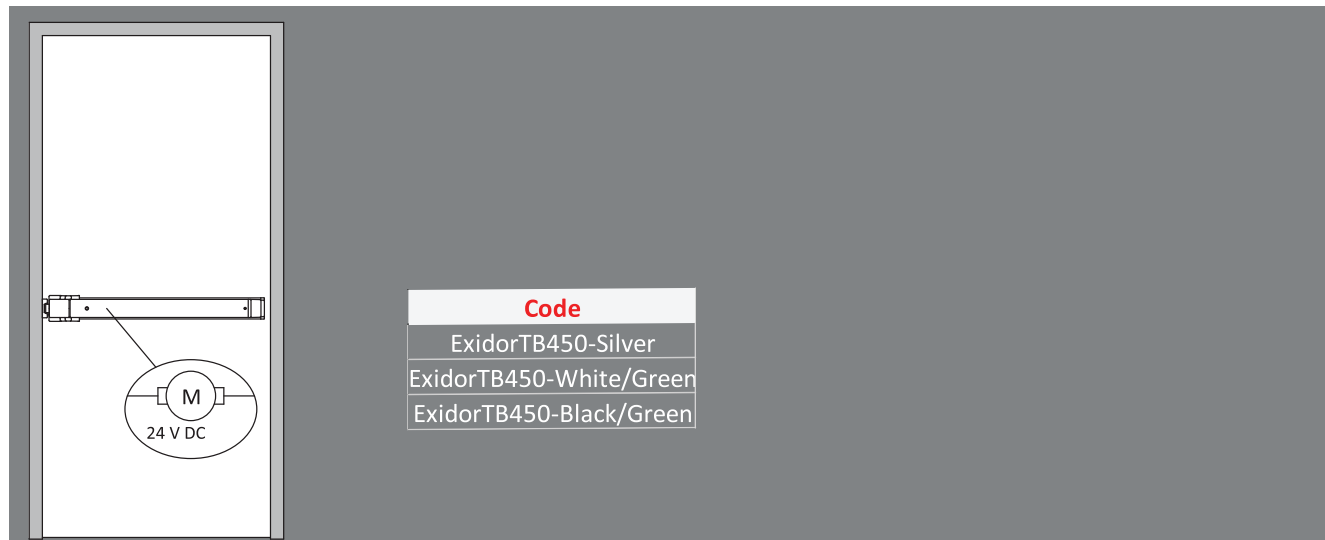
- Non-handed
- CE marked for safety
- Surface mounted
- Suitable for use with access control systems
- Low power usage
- Operates from a 24V DC 1A power supply (not provided)
- Built in electronic dogging
- Standard colours: silver, white with green touch bar and black with green touch bar
- Plated finishes and most RAL colours available



Standard Sizes  
TB450 can be used for doors up to 900mm wide.  
Please check with Fortress Land for special sizes.

Additional options  
The Exidor ELR touch bar panic latches can be supplied with:

- Microswitch (suffix MS after the product code)
- Alarm (suffix AL after the product code)



TB450

Exidor 400 Panic Exit

SINGLE POINT LOCKING

400 Touch Bar Panic Latch for Doors Up To 900mm Wide

Classification No.	3	7	6	B	1	3	2	2	B	A
EN 1125 : 2008										

The Exidor 400 are surface mounted touch bar panic latches for wooden or steel, single and double door applications, including fire doors. The 400 is suitable for doors up to 900mm wide. Simply pushing the touch bar provides safe and speedy exit in panic situations, whilst the patented lip prevents accidental jamming. Combining smooth stylish lines with the excellence of British engineering ensures they're elegant enough for use in the most prestigious buildings with integrated interiors.

- Non-handed
- CE marked for safety
- Suitable for fire doors
- Surface mounted
- Two standard sizes - other sizes available on request
- Deadlocking latch bolt
- Standard colours: silver, white with green touch bar and black with green touch bar
- Plated finishes and most RAL colours available

BS EN 1125



MADE IN  
BRITAIN



Standard Sizes

The 400 can be used for doors up to 900mm wide. Please check with Fortress Land for special sizes.

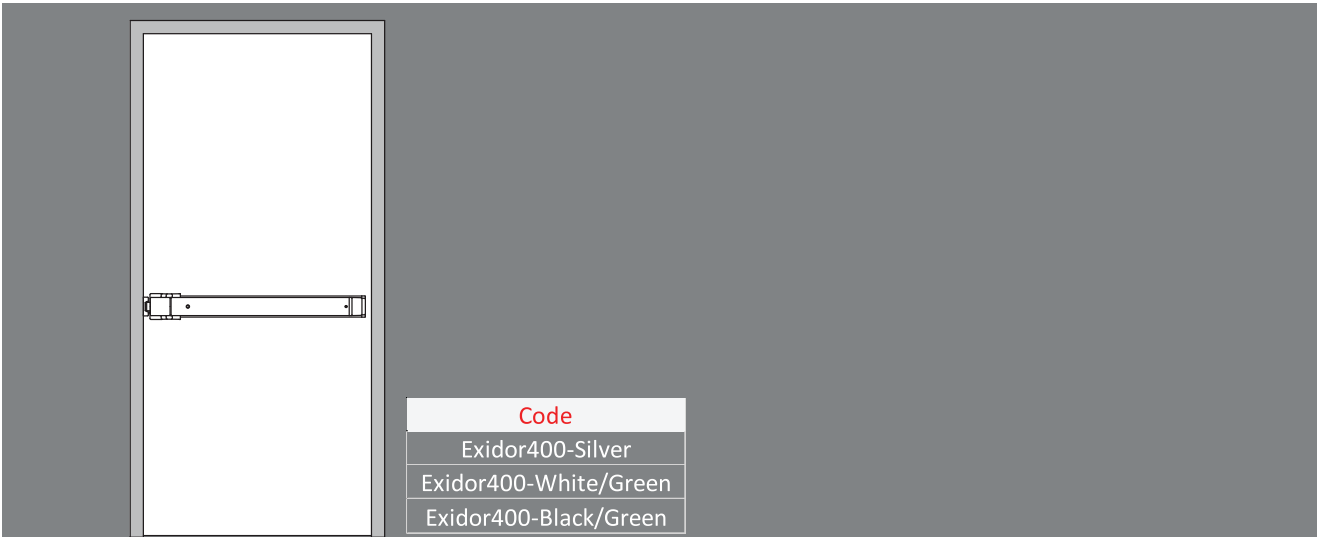
Additional options

The Exidor touch bar panic latches can be supplied with:

- Microswitch (suffix MS after the product code)
- Alarm (suffix AL after the product code)
- Dogging (suffix WD after the product code). Please note that WD products are not fire rated

Optional accessories

- 410EC Outside access device with Euro cylinder – lever operated



Exidor 402 - Single Doors Panic Exit

TWO POINT LOCKING

**402** Touch Bar Panic Bolt With Vertical Latches for Doors Up To 900mm Wide

Classification No.	3	7	6	B	1	3	2	2	B	A
EN 1125 : 2008										

The Exidor 402 is surface mounted touch bar panic bolts for wooden or steel, single and double door applications, including fire doors. The 402 is suitable for doors up to 900mm wide.

The vertical Pullman latches offer increase security, whilst the patented lip prevents accidental jamming of the touch bar. Combining smooth stylish lines with the excellence of British engineering ensures they're elegant enough for use in the most prestigious buildings with integrated interiors.



BS EN 1125



**Standard Sizes:**

The 402 can be used for doors up to 900mm wide. Please check with Fortress Land for special sizes.

**Additional options:**

The Exidor touch bar panic bolts can be supplied with:

- Microswitch (suffix MS after the product code)
- Alarm (suffix AL after the product code)
- Dogging (suffix WD after teh product code). Please note that WD products are not fire rated.

**Optional accessories**

- 410EC outside access device with Euro CYlinder - lever operated





### Outside Access Devices

All the Exidor 400 series OADs have been certified for use with the Exidor 400 range of bolts and latches. The use of any other OAD will invalidate the CE marking on these products.



#### 410 Lever Operated Outside Access Device

The Exidor 410 offers a lever operated outside access device that meets the dimensional requirements of the Equality Act 2010 (formerly known as the DDA) and BS8300 – Approved Document “M”.

The 410 is supplied with three keys, and has the advantage that a master keyed 40mm Euro profile cylinder can be used. Suitable for use with the Exidor 400 series, the 410 offers access from the outside of the door.

- Non-handed
- Meets the dimensional requirements of BS8300 and approved document “M”
- Surface mounted on the outside of the door using two/three machine screws
- Same fixing points as the 411 – easy retro fit
- Supplied as standard for doors up to 55mm thick

#### Performance

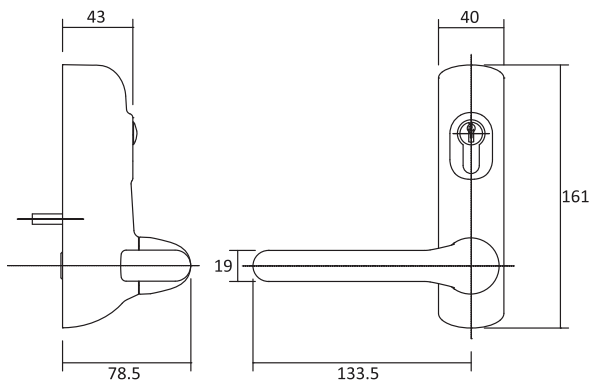
When locked, the lever is disengaged from the mechanism and still rotates therefore preventing unauthorised entry and damage to the unit. When unlocked, the lever, spindle and mechanism engage allowing the Pullman latches to be withdrawn from the outside of the door. The lever remains engaged until the mechanism is re-locked.

#### Finishes

Available as standard in silver, white or black, there is also a choice of RAL colours



410



Measurement in mm

### Double Rebated Door Accessories

#### 406B Centre Latch Keep for Rebated Double Doors / Single Flush Faced Doors and Frames

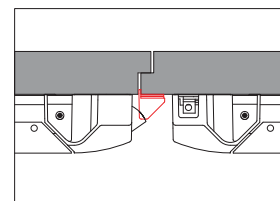
- For 400 series panic latches and the three point panic bolts when used on rebated double doors or single flush faced doors and frames.

Construction – diecast aluminium

Finish – Silver



REBATED DOUBLE DOORS



406B

Model	Description	Finish	Code
406B	Double Door Keep Accessories to combine Exidor 402 and 400 to make double rebated Door	Silver	Exidor406B