

DOOR CLOSERS



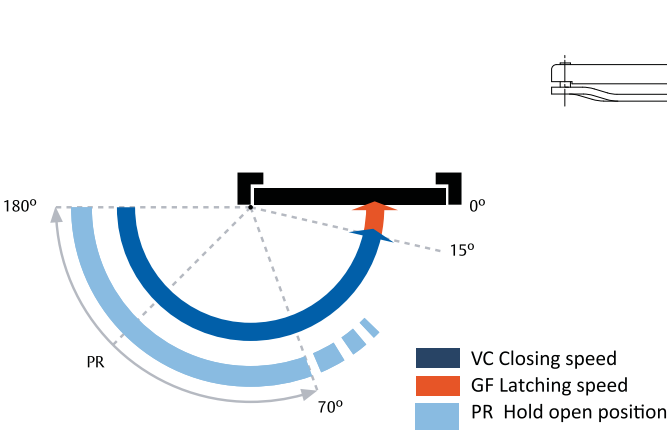
TESA Standard Arm Door Closer 60kg

TESA CT500

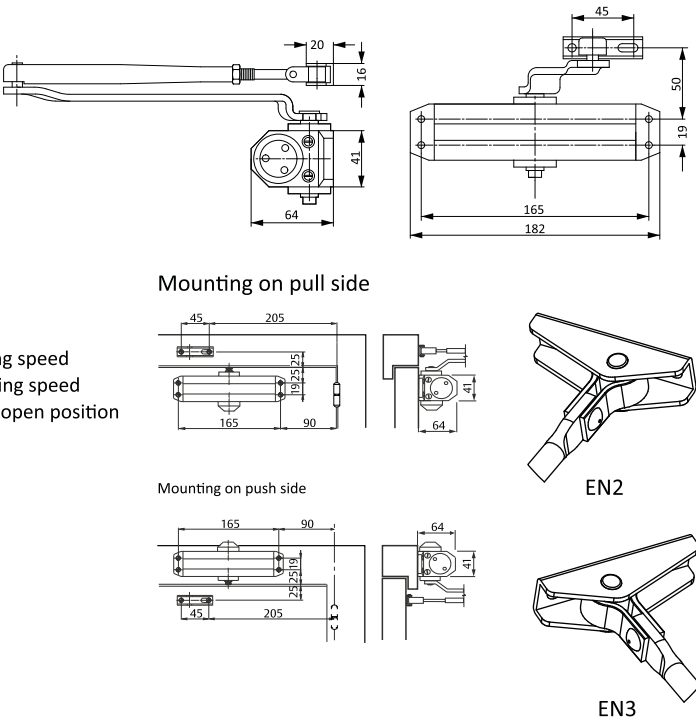
The CT500 is a door closer taht offers good performance in a compact size.
It can drive doors from size 2 to 3. This means theat the CT500 will feel comfortable closing doors weighing from 40 to 60kg. and Up to 950mm door width.

This capability is achieved in a single model thanks to the vairable position installation system.

- Rack and pinion mechanism for smooth and reliable operation.
- Tow valves to adjust both sweep and latch speeds separately.
- Two sizes (EN2 and EN3) in a single model.
- Reversible.
- CT501 model permits to hold the door open at any position between 0° and 180°.
- Suitable for doors opening inwards or outwards:
 - Standard mounting: door open inwards, mounting on the pull side
 - Transom mounting: door open outwards, mounting on the push side.
- Four finishes: White (BL), Black (NE), Silver (PL) and Gold (OR).



Size	Door Width	cm	Door Weight Kg
2	85		40
3	95		60



CT500 - Ordering Information				
Version	Model Description (Body + Arm)	Finish	EN	Item Code
CT500	CT500 Link Arm Door Closer (Standard arm)	Silver	EN 2-3	CT50023PL
CT500	CT500 Link Arm Door Closer (Hold Open Arm)	Silver	EN 2-3	CT50123PL

TESA Fire Rated Standard Arm Door Closer 80kg

CT1800

Multi size door-closer (2-3-4) by means of three mounting positions.

CT1800 has been EN1154 certified and hence valid for Fire Doors.

- » One model for three sizes: EN2, EN3 and EN4
- » Maximum opening up to 180° (depending on door hinges and environment). Up to 105° mounted at
- » Distance between fixing holes is 19 mm: CT1800 closers fit any aluminium door.
- » Reversible, non handed.
- » Finishes: White (BL), Black (NE), Silver (PL).

Classification with EN1154:1996+A1:2002

Standard arm transom mountings:

3 8 2/4 1 1 4

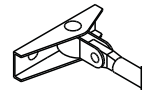
With parallell arm bracket SOP1800

3 8 3 1 1 4

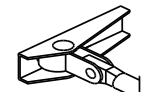


EN 1154 CERTIFIED

Fire door



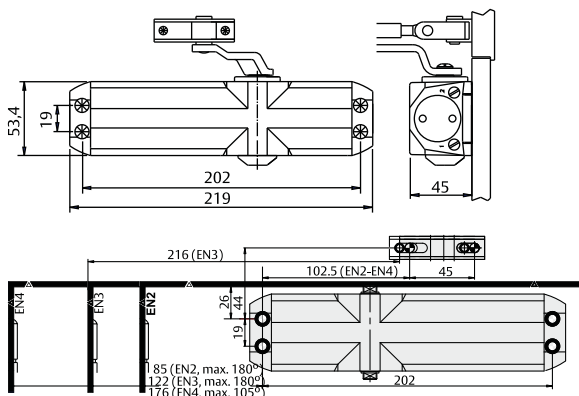
EN2-3



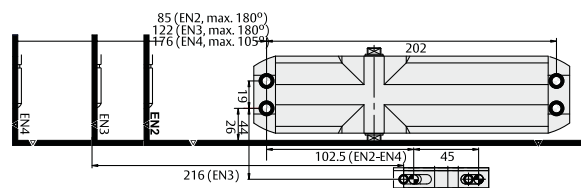
EN4



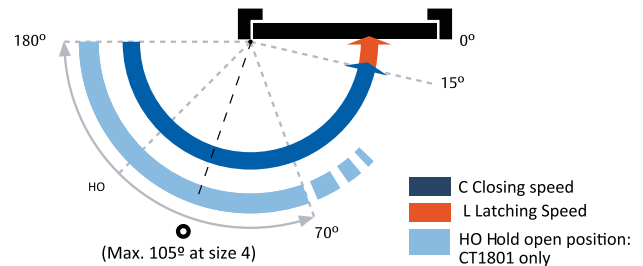
SOP1800 Parallel Arm installation bracket.



Standard mounting: Pull side



Transom mounting: Push side



Size	Door Width cm	Door Weight Kg
2	85	40
3	95	60
4	110	80

CT1800 - Ordering Information

Version	Model Description	Finish	EN	Max Door Dimension	Max Door Weight	Item Code
CT1800	Fire Rated Link Arm Door Closer (Non Hold Open)	Silver	EN 2-4	110cm width	80kg	CT180034PL
CT1800	Fire Rated Link Arm Door Closer (Hold Open)	Silver	EN 2-4	110cm width	80kg	CT180134PL
Optional Accessoreis						
SOP1800PL	CT1800 Parallel Arm Installation bracket	Silver	-	-	-	SOP1800PL

Door Closers

TESA Door Closers

Fortress Land Door Hardware

TESA Fire Rated Standard Arm Door Closer 160kg

TESA CT3000

CT3000 closers offer the most refined size and speed adjustment capability, an outstanding power adjustment scope and impressive hydraulic control for heavy doors up to 160 kg. These and other characteristics make it be the professional's choice for any heavy duty door subjected to high traffic volumes, wind draughts or even abuse.

» EN1154 certified: EN1154:1996+A1:2002

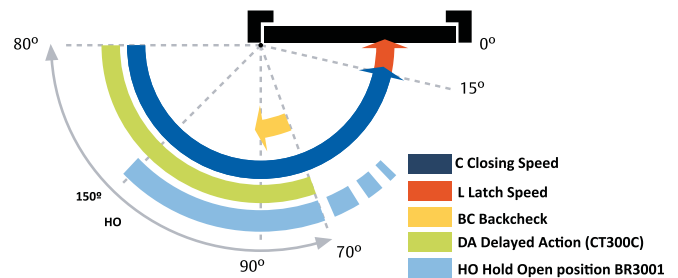
CT300036 with link arm: **4 8 2/6 1 1 4**

CT300036 with guide rail: **4 8 1/4 1 1 4**

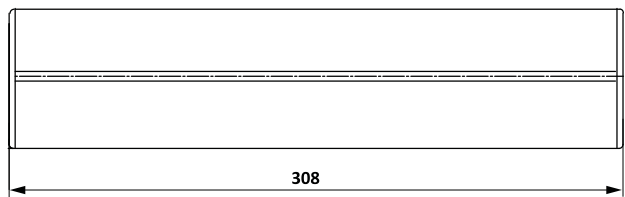
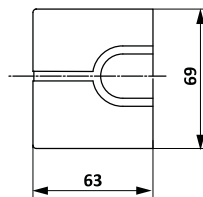
- » Continuously adjustable size from EN2 to EN6.
- » CT300036 combined with guide rails is size adjustable from EN1 to EN4.
- » Backcheck valve to protect the door against violent openings.
- » CT300036 includes Delayed Action valve.
- » DCL192: Adjustable hold open arm.
- » Internal Safety Valves protect the closer mechanism and door environment from rough or abusive use thanks to, their pressure relief action.
- » Outstanding thermal behaviour. Working temperature: -35°C to 50°C



EN 1154 CERTIFIED
Fire door

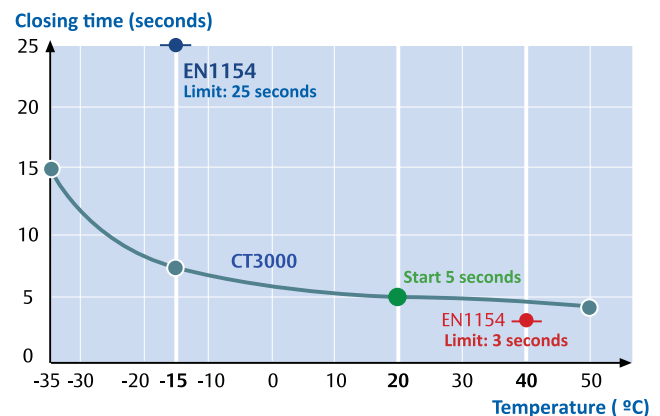


Extendable height spindle 14 mm.



Size (EN 1154)	Door width cm	Door weight Kg
2	85	40
3	95	60
4	110	80
5	125	100
6	140	120

CT3000: Stable under any circumstance
Closing time versus temperature



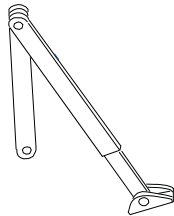
CT3000 - Ordering Information				
Version	Model Description (Body Only)	Finish	EN	Item Code
CT3000	CT3000 Link Arm Door Closer	Silver	EN 2-6	CT300036PL
CT3000	CT3000 Link Arm Door Closer (Delayed Action)	Silver	EN 2-6	CT300036PL
Note: Please order Arms separately to fit your application.				
Compatible arms: DCL190, DCL192, DCG193				

Accessories for CT3000

DCL190

Standard arm, for CT3000

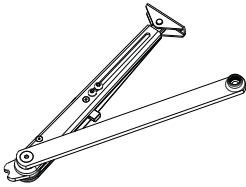
DCL190 Standard arm	
Model	Finish
DCL190-----EV1-	Silver
DCL190-----35--	Stainless steel
DCL190-----9005	Black
DCL190-----9016	White



DCL192

Hold open arm, for CT3000

DCL192 hold open arm	
Model	Finish
DCL192-----EV1-	Silver
DCL192-----9005	Black
DCL192-----9016	White



DCG193

Standard guide rail, for CT3000, CT4500 and CT5000

Model	Finish
DCG193-----EV1-	Silver
DCG193-----9005	Black
DCG193-----9016	White



DCA152

Hold open device for DCG193 and DCG195 guide rails.
Max. Hold Open position: 150°. Includes Hold Open force adjustment.

Model	Finish
DCA152-----	-



DCA153

Opening limit device for DCG193 and DCG195 guide rails. Max. door stop position: 150°.

Model	Finish
DCA153-----	-



Please add one of the below for CT3000 Closer				
Version	Model Description (Body Only)	Finish	EN	Item Code
DCL190	Standard arm for CT3000	Silver	-	DCL190-----EV1-
DCL192	Hold open arm for CT3000	Silver	-	DCL192-----EV1-
DCG193	Standard Guide Rail for CT3000	Silver	-	DCG193-----EV1-
Optional Accessoris				
DCA152	Hold Open Device for DCG193	-	-	DCA152----
DCA153	Opening limit device for DCG193	-	-	DCA153----

EXIDOR 6000 Series Concealed Door Closers Up to 80kg doors

BS EN 1154

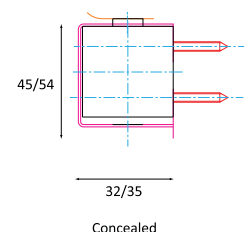
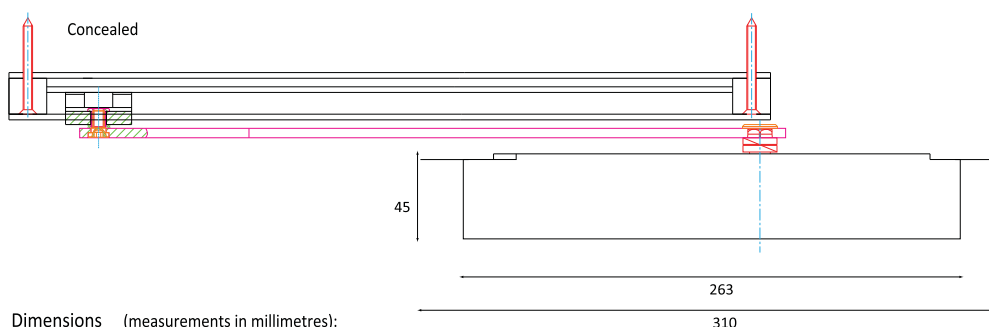
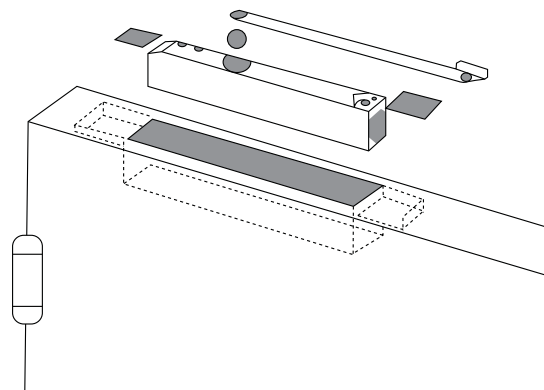


WITH MATCHING SLIDE ARM & CHANNEL

The Exidor 6000 Series concealed and slimline range offers two closers, one which is concealed within the door. The concealed version is particularly suitable for use where discreet door control is preferred or where there is a high risk of vandalism. The concealed unit also has a retrofit option which offers easier fitting as it does not require the door frame to be cut to accommodate the slide arm track.

Adjustable power size EN2-4 with adjustable closing and latching speed. Non-hold open and Hold open version as standard. Also available with backcheck option. 6800 concealed door closer also available with double action option.

		6800	6805
Concealed		✓	✓
Slimline with Cover		X	X
Closing Force	EN Size	2-4	2-4
Door Size (Max)	Width (mm)	1100	1100
	Weight (KG)	80	80
Application	Fig 1	✓	✓
	Fig 6	✓	✓
	Fig 66	✓	✓
Mechanism	Rack & Pinion	X	X
	Cam Action	✓	✓
Angle of Opening		120°	120°
Non Handed		✓	✓
Power Adjustment	By Spring	✓	✓
	By Template	X	X
Adjustable Sweep Speed		✓	✓
Adjustable Latching Speed		✓	✓
Backcheck		X	X
Hold Open		X	✓
CE Marked		✓	X
Certifire Approved		✓	X
Guarantee		10 yrs	10 yrs
OPTIONS			
Retro Fit Channel and Arm		✓	X
Double Action		✓	✓
Cover	Radius	X	X
	Square	X	X
Finishes	Silver, RAL, PB, SS, PS		



Dimensions (measurements in millimetres):

310