

MORTISE LOCKS



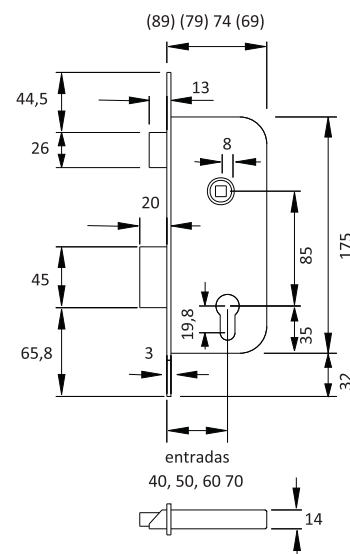
Mortise Locks

TESA Standard Mortise Locks

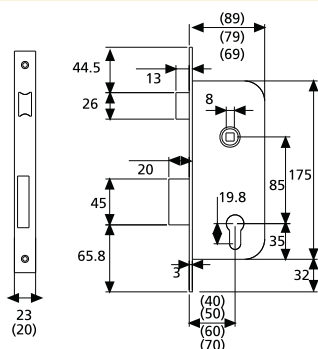
Fortress Land Door Hardware

4030 Series - Standard Mortise Lock

- » Sashlock for timber doors.
- » Reversible.
- » Distance between axes: 85 mm.
- » Standard Backset: 50mm (also available in 40/60/ 70 mm)
- » Follower: 8 mm
- » 1/2 rounded forend available.



4030 Standard



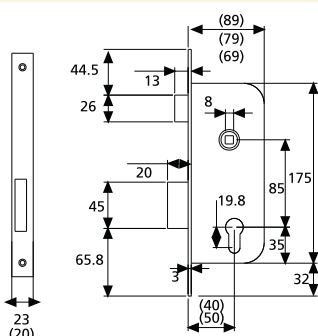
4030 Series - Standard Mortise Lock

Operation

- » Reversible latchbolt withdraws from either side with levers or knobs or by cylinder.
- » 20 mm. double throw.

Description	Backset	Finish	Item Code (Square End)	Item Code (Round End)
TESA Non-Fire Rated Mortise Lockcase	50	SS	403050AI	40305RAI
TESA Non-Fire Rated Mortise Lockcase	50	Satin Brass	403050HL	40305RHL

4030 - Dead bolt only



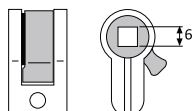
4031 Series - Dead Bolt Only Mortise Lock

Features

- » Deadlock. Standard Backset: 50mm (also available in 40/60mm)
- » 20 mm. double throw.

Description	Backset	Finish	Item Code (Square End)	Item Code (Round End)
Deadbolt only mortise lockcase	50	SS	4031F5USAI	4031F5URAI
Deadbolt only mortise lockcase	50	Satin Brass	4031F5USHL	4031F5URHL

Accessories



Accessories		
Description	Finish	Item Code
Adapter to make Euro Cylinder Lockcase into 6mm Privacy Lockcase	-	TESA ADAPT2034



AGB MORTISE LOCKS

91 - Bianco RAL 9010
White RAL 9010



03 - Ottone verniciato
Enamelled brass plated



10 - Ottone lucido verniciato
Enamelled polished brass



23 - Ottone opaco
Matt brass plated



58 - Ottone satinato
Satin brass



06 - Nichelato lucido
Polished Nickel plated



30 - Cromo lucido
Polished chromium plated



13 - Nichelato satinato
Satin nickel plated



64 - Cromo satinato semilucido
Semi-gloss satin chrome



34 - Cromato opaco
Matt chromium plated



15 - Zinco Silver
Silver zinc finish



08 - Inox Satinato
Satin stainless steel



41 - Argento verniciato
Varnished Silver



53 - Argento antico
Antique silver



12 - Ottone antico
Antique brass plated



72 - Ottone antico opaco
Opaque antique brass plated



42 - Bronzato antico
Antique bronze plated



22 - Bronzato verniciato
Enamelled bronze



F9 - Titanio nero lucido
Polished black titanium



63 - Nero opaco verniciato
Varnished matt black



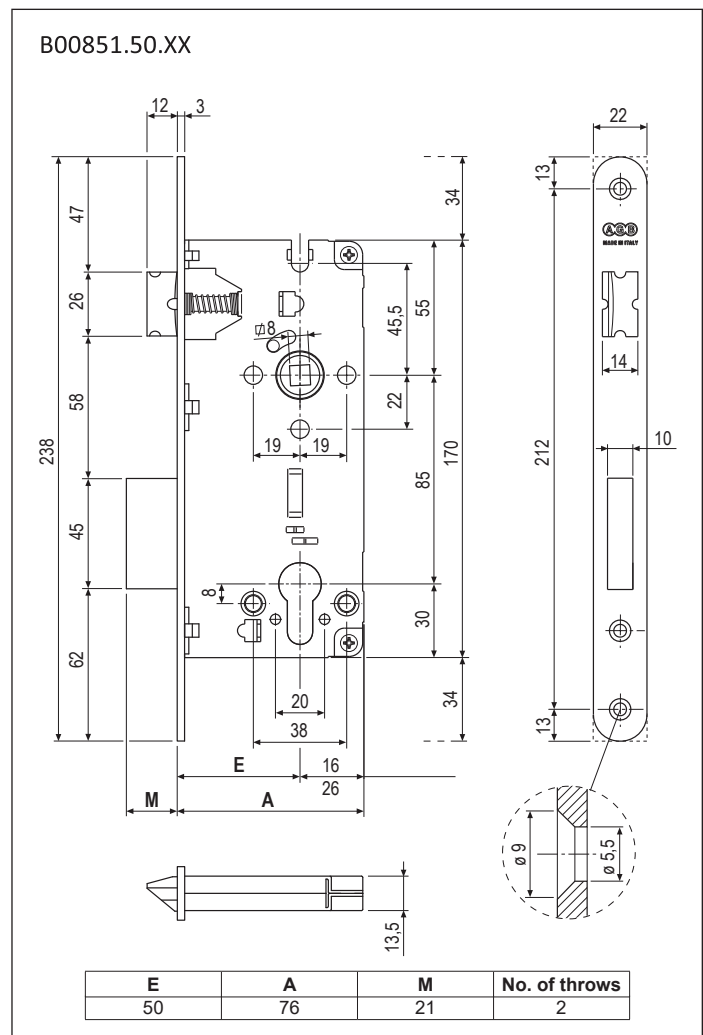
93 - Nero lucido verniciato
Varnished gloss black



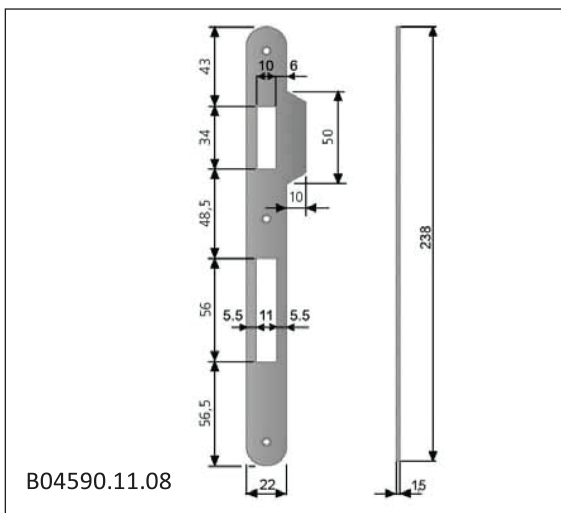
AGB Standard Mortice Locks

Fortress Land Door Hardware

Cardboard box containing one lock and one screw for fastening the cylinder. The cylinder must be ordered separately.



Please check with Fortress Land for project's specific requirements: different finishes, different backset etc....



Model Description	Material	Finish	Item Code
Stainless Steel Strike	Stainless Steel	Stainless Steel	B04590.11.08

AGB Standard Mortise Locks

Dead bolt only, round ends with cylinder lock, 22 mm forend



Embedded lock with bolt only, to be used in combination with a DIN V1854 profile cylinder. 22mm forend with round ends, 35 to 70mm backsets. Furnished with the striker, which has the same finish as the forend. Made entirely of steel or with brass forend, bolt and striker.

Install on interior and main timber doors. For applications not requiring a spring latch, or as an extra lock where greater security and protection against forced entry are required.

Prepare cutout and mill the panel according to the dimensions shown in the diagram. Secure lock and striker with 4 screws 4x25mm.

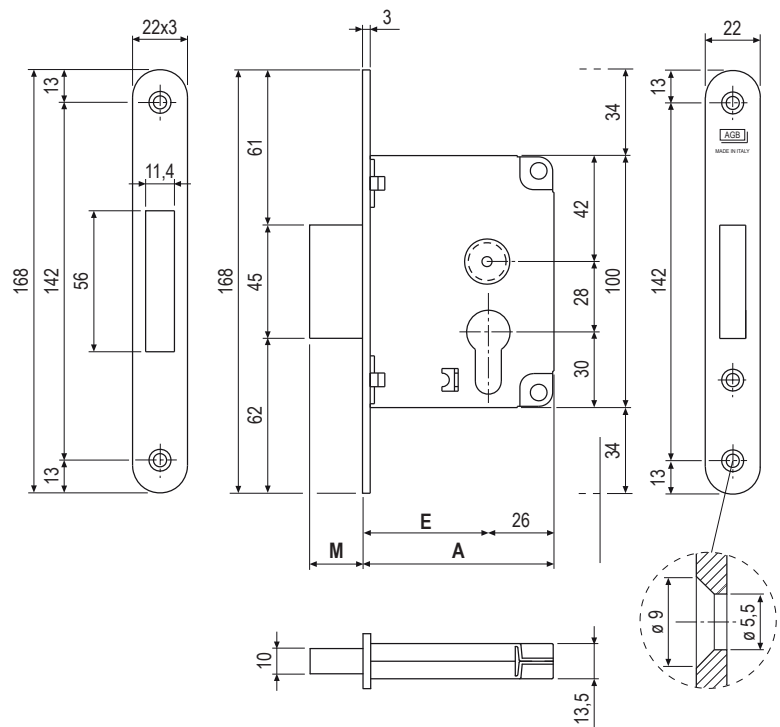
Order Specifications

Sicurezza Mortise Lock-bolt only

Model Description	Forend (mm)	Material	Backset (mm)	Finish	Item Code	Note
Sicurezza Mortise Lock-bolt only	Round 22 x 168	Steel	50	Matt Chromium Plated	B00855.50.34	Includes Strike Plate
Sicurezza Mortise Lock-bolt only	Round 22 x 168	Steel	50	Enamelled Brass Plated	B00855.50.03	Includes Strike Plate

Note: Cover tray for striker / dust boxes sold separately.

Please check with Fortress Land for project's specific requirements.



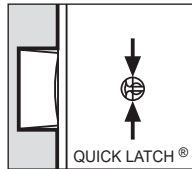
E	A	M	No. of throws
50	76	21	2

Mortise Locks

AGB Standard Mortise Locks

Fortress Land Door Hardware

Silent Type Mortise Lock Mediana Evolution, Round ends,



Description

Embedded lock with central spring latch only made of polyamide, a particular non-deformable NYLON that allows maximum resistance against wear and noiselessness.

The key locks the spring latch but allows free movement of handle to prevent accidental forcing of mechanism.

Steel forend, 18mm large with rounded ends. 85mm centre. Steel lockcase with through screw-holes for handle assembly. Latch can be retracted also with cylinder.

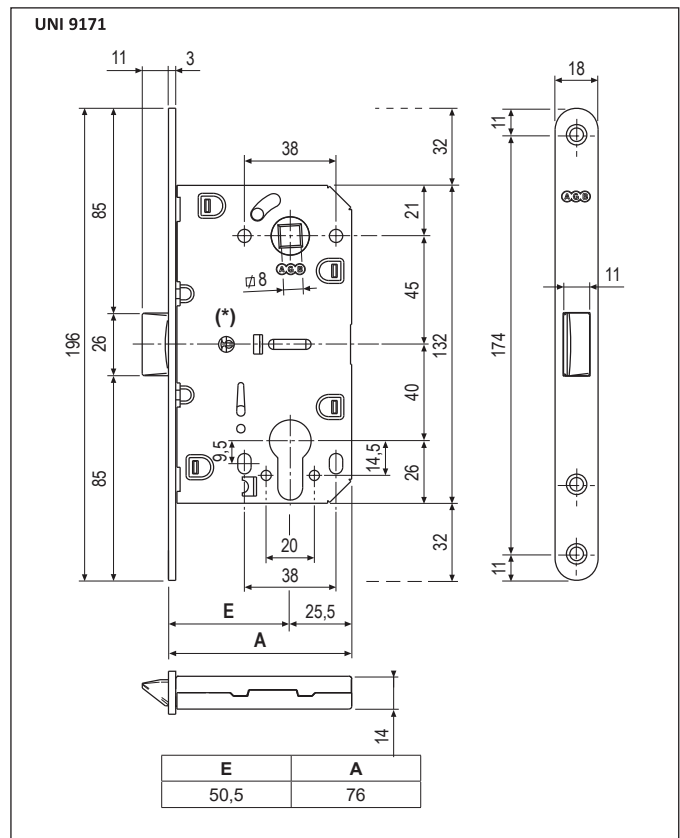
Application

For interior timber doors with rounded edge. Latch reversible at site. The latch can be locked inside the lockcase to make the packing and transport of the doors easier, or inhibit the latch when the door is mounted.



Order Specifications

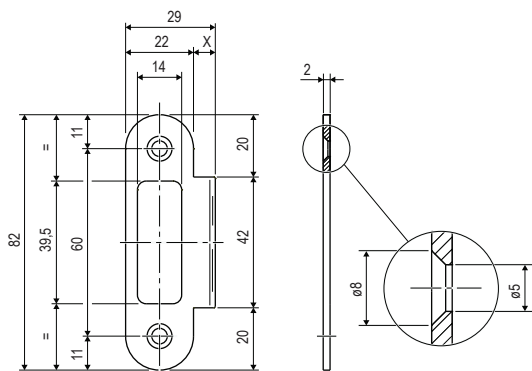
Mediana Evolution - Cylinder versions						
Version	Model Description	Forend (mm)	Material	Backset (mm)	Finish	Item Code
	Mediana Evolution-Cylinder	Round 18 x 196	Steel	50	Matt Chromium Plated	B01103.50.34
	Mediana Evolution-Cylinder	Round 18 x 196	Steel	50	Enamelled Brass Plated	B01103.50.03
Note: Please order strike plates separately according to door thickness.						
Note: Cover tray for striker / dust boxes sold separately.						



Mounting

Prepare cutout and mill the door panel according to the dimensions shown in the diagram. Secure the lock with two 3.5x20mm screws. The screws are not included in the pack.

Strikeplate Dimension



Strike plates for Mediana Evolution, Door thick 35mm X=7			
Description	Material	Finish	Item Code
Strike Plates	Steel	Matt Chromium Plated	B01402.15.34
Strike Plates	Steel	Enamelled Brass Plated	B01402.15.03

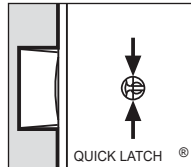
Strike plates for Mediana Evolution, Door thick 44mm X=11			
Description	Material	Finish	Item Code
Strike Plates	Steel	Matt Chromium Plated	B01402.14.34
Strike Plates	Steel	Enamelled Brass Plated	B01402.14.03
Strike Plates	Steel	Antique Brass Plated	B01402.14.12

Mortise Locks

AGB Standard Mortise Locks

Fortress Land Door Hardware

Mediana Evolution Bathroom lock 96mm center, 18mm forend

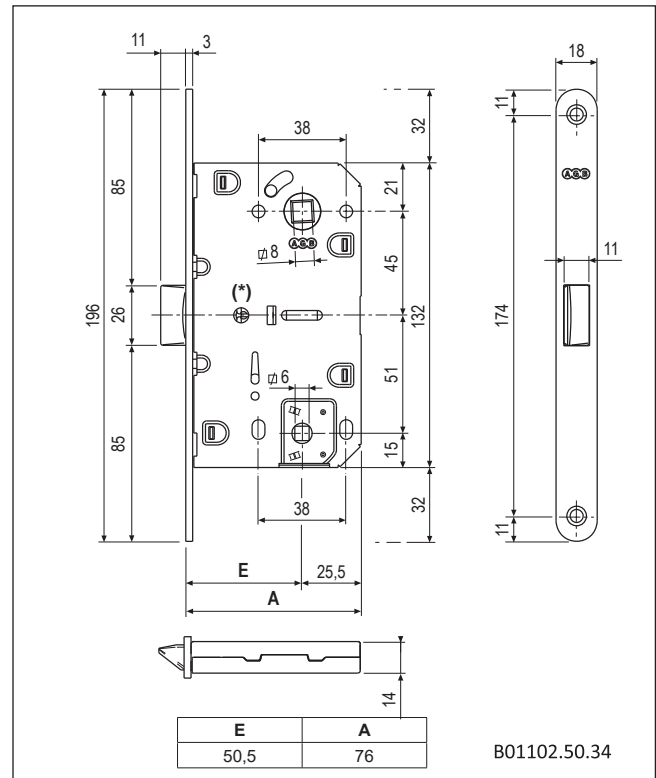


Description

Embedded lock with central spring latch only made of polyamide, a particular non-deformable NYLON that allows maximum resistance against wear and noiselessness. The bathroom lock blocks the pring latch but allows free movement of handle to prevent accidental forcing of mechanism. Steel forend, 18mm with rounded ends. Backset 50. 96mm center. 6mm spindle hub. Steel lockcase with through screw holes for handle assembly.

Application

For interior timber doors with rounded edge. Thanks to the QUICK LATCH patented latch and reversible system. To change the hand of the door push a key or the tip of a screw driver inside the indicated hole, at the same time extract the latch, tun it of 180° and insert it in its hole again. For easier packaging and transportation of the finished panel, the spring latch can be secured inside the lockcase by pushing it in and turning the key, to make the packing and transporting of the door easier, or inhibit the latch when door is mounted.



Mounting

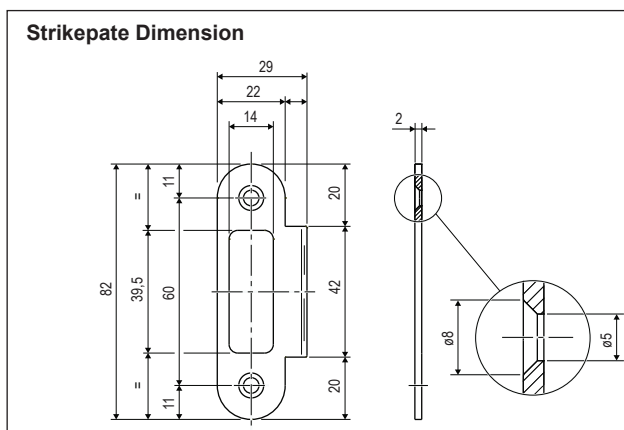
Prepare cutout and mill the panel according to the dimensions shown in the diagram. Secure the lock with two 3.5x20mm screws.

NB. The striker, selected according to the construction type, must be ordered separately.



Order Specifications

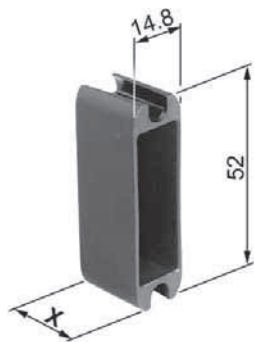
Mediana Evolution - Bathroom						
Version	Model Description	Forend (mm)	Material	Backset	Finish	Item Code
	Mediana Evolution-Bathroom	Round 18 x 196	Steel	50mm	Matt Chromium Plated	B01102.50.34
	Mediana Evolution-Bathroom	Round 18 x 196	Steel	50mm	Enamelled Brass Plated	B01102.50.03
	Mediana Evolution-Bathroom	Round 18 x 196	Steel	50mm	Antique brass plated	B01102.50.12
Note: Please order strike plates separately according to door thickness.						
Note: Cover tray for striker sold separately.						



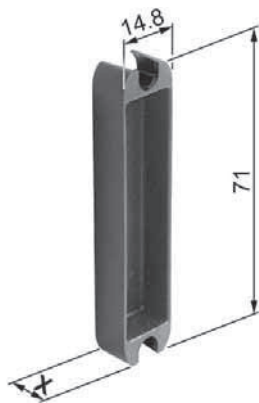
Strike plates for Mediana Evolution, Door thick 35mm X=7			
Description	Material	Finish	Item Code
Strike Plates	Steel	Matt Chromium Plated	B01402.15.34
Strike Plates	Steel	Enamelled Brass Plated	B01402.15.03

Strike plates for Mediana Evolution, Door thick 44mm X=11			
Description	Material	Finish	Item Code
Strike Plates	Steel	Matt Chromium Plated	B01402.14.34
Strike Plates	Steel	Enamelled Brass Plated	B01402.14.03
Strike Plates	Steel	Antique Brass Plated	B01402.14.12

Cover Trays for Sicurezza & Sicurezza SL

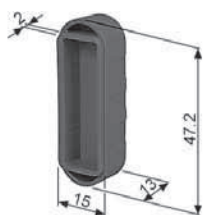


Cover tray for striker - 38mm hole (X = 20mm)		
Model Description	Finish	Item Code
Cover tray for striker - 38mm hole	Black	B01060.21.93
Note: Cover tray for latch hole - Sicurezza & Sicurezza SL		



Cover tray for striker - 57mm hole (X = 20mm)		
Model Description	Finish	Item Code
Cover tray for striker - 57mm hole	Black	B01060.22.93
Note: Cover tray for deadbolt hole - Sicurezza & Sicurezza SL		

Cover Trays for Mediana Evolutions



Adjustable cover tray for Mediana Evolution Striker		
Model Description	Finish	Item Code
Cover tray for Mediana Evolution striker	Black	B01060.22.93
Note: Cover tray latch hole - Mediana Evolution		