

# Introduction to Electric Locks

ABLOY electric locks have been manufactured over 40 years, since 1970's. ABLOY motor lock was the first of its kind in the world, and since then we have proudly presented the best electric locking solutions to all around the world. Today we can offer a whole range of electric locks to secure different types of door environments. DIN range locks are designed to match the regulations and dimensions of the European markets but are known and used all around the world.

## WITH THESE SYMBOLS YOU CAN EASILY FIND THE RECOMMENDED PRODUCTS AND FEATURES OF EACH LOCK



**HANDLE USED**  
indicates when handle is being pressed down



**BOLT IN**  
indicates when deadbolt is retracted



**BOLT OUT**  
indicates when deadbolt is completely drawn out and deadlocked



**CYLINDER USED**  
indicates when key is turned inside the cylinder



**DOOR CLOSED**  
indicates when trigger bolt is pressed in



**CABLE SABOTAGE**  
Indicates when cable is cut



EN179 standard for emergency exit products, exit route can be equipped by handles.



EN1125 standard for panic exit products, exit route must be equipped with panic bars.



EN1634 standard for fire door products, defines the category of fire insulation.

The following standards apply to specific lock cases depending on the category of use.

Exit standards require a lock case model with inside handle, push pad or panic bar that can always be used for safe exit.



CYLINDER



LOCK CASE



STRIKE PLATE



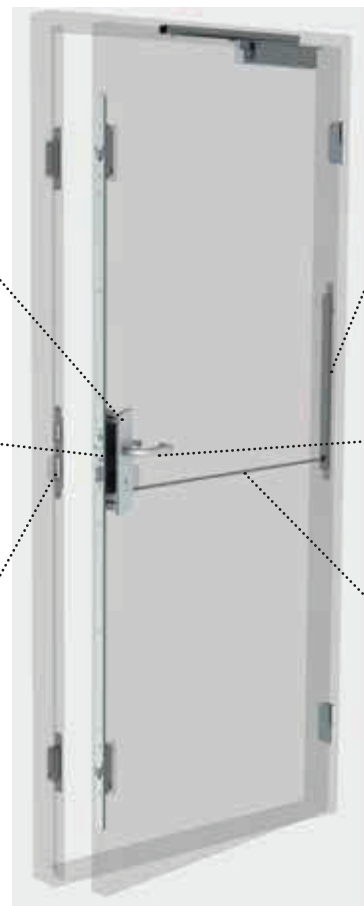
LEAD COVER



FITTINGS AND HANDLES



CABLE





### SOLENOID LOCKS HANDLE CONTROL



EL460/EL461



EL560 / EL561

#### APPLICATION

Solenoid locks are used in doors that require:

- Safety Exit Doors, High Security Doors

Typical application are offices, meeting rooms and other interior doors of public buildings.

#### EL460/EL560:

One side handle controlled with another side exit handle

#### EL461/EL561:

Double side handle controlled.

Solenoid locks can be used in exit doors equipped with exit handles, push pads or panic bars. Locks can be electrically controlled by access control system or by other remote control system such as time control, keypad or push button.

#### FUNCTION

Two deadlocking elements: a double action latch and a dead bolt.

The deadbolt is withdrawn inside the lockcase by pushing the inside handle. Locks are always automatically deadlocked when the door is closed.

#### CONTROL SWITCH

Locks can be set to function as Fail Locked or Fail Unlocked.

**Fail locked setting:** the lock can be opened by controlled handle/s when power is on.

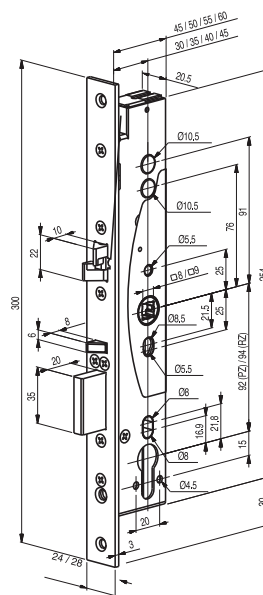
**Fail Unlocked setting:** the lock cannot be opened by controlled handle/s when power is off.

#### NOTE:

Please order the below items separately as necessary:

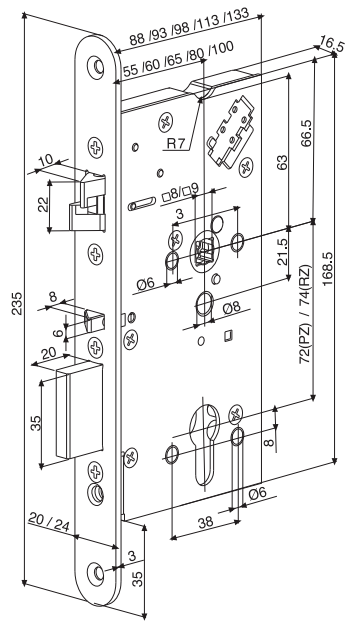
- Strike Plate
- ABLOY EA218 (6m) Cable
- ABLOY EA281 Cable Transfer
- Europrofile cylinder
- Lever Handles

### DIMENSIONS



EL460 / EL461

For narrow stile doors



EL560 / EL561

For narrow stile doors

#### Standard delivery includes:

- 1.Lockcase
- 2.Fixing screw
- 3.Spindle adapter
- 4.Installation Manual

#### SPECIFICATION

**Non-handed.**

**Operating Voltage:** 12-24VDC (+15%)

**Current:** 0.55A (12V), 0.27A (24V)

**Relays:** Max 0.5A 30V AC/DC resist. 10W

**Operating temperature:** -20°C to +60°C

**Spindle:** 9mm (8mm spindle with snap spindle adapters)

**Monitoring outputs:** Bolt Out, Bolt In, Door Status, Handle used, Cylinder used, cable sabotage

#### EL518 (Wooden & Metal Doors)

Backset: 55, 60, 65, 80, 100mm

Forend: 20, 24mm

#### EL418 (Narrow profile doors)

Backset: 30, 35, 40, 45mm

Backset: 24, 28mm

### Recommended Accessories



EA324



E219



EA281



CY321T



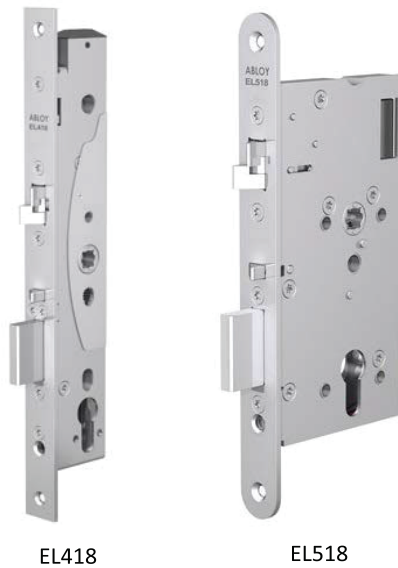
EH004

### Standards



\* EL461 and EL561 are not EXIT-approved.

### Motor Locks



EL418

EL518

#### APPLICATION

ABLOY Motor locks are used in doors that require:

- Convenience (push / pull function)
- Security (no handles outside)
- High durability (high traffic doors)
- Door automation and controlled access

#### FUNCTION

ABLOY Motor lock has two deadlocking elements: a double action latch and a dead bolt. The deadbolt is withdrawn inside the lockcase by motor and the double action latch is released, when electrical control is on. Locks are always automatically deadlocked when the door is closed.

#### CONTROL SWITCH

Dead bolt is retained inside the lock case as long as electrical control is on. When the door closes and the delay or electrical control is off, both deadbolt and double action latch are deadlocked. The bolt remains its current position in case of power failure.

#### SPECIFICATION

**Non-handed.**

**Operating Voltage:** 12-24VDC (+15%)

**Current:** 0.7A (12V), 0.45A (24V)

**Relays:** Max 0.1A 30V AC/DC resist. 3W

**Operating temperature:** -20°C to +60°C

**Spindle:** 9mm (8mm spindle with snap spindle adapters)

**Monitoring outputs:** Bolt Out

#### EL518 (Wooden & Metal Doors)

Backset: 55, 60, 65, 80, 100mm

Forend: 20, 24mm

#### EL418 (Narrow profile doors)

Backset: 24, 28mm

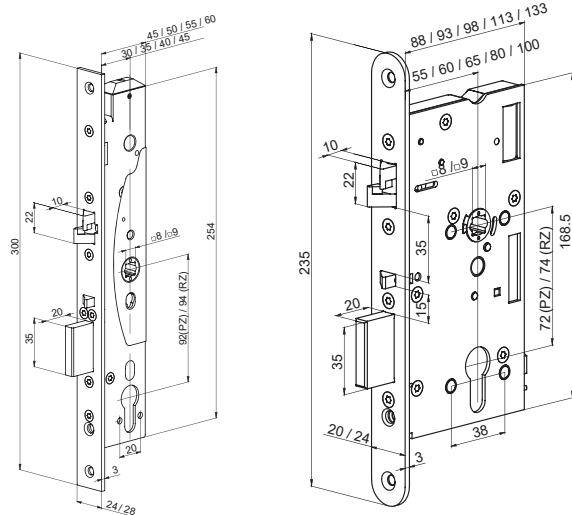
#### NOTE:

Please order the below items separately as necessary:

- Strike Plate
- ABLOY EA221 Cable
- ABLOY EA281 Cable Transfer
- Europrofile cylinder
- Lever Handles

### DIMENSIONS

For SMALL BUSINESS, PUBLIC AND HI-SECURITY, singlepoint locks



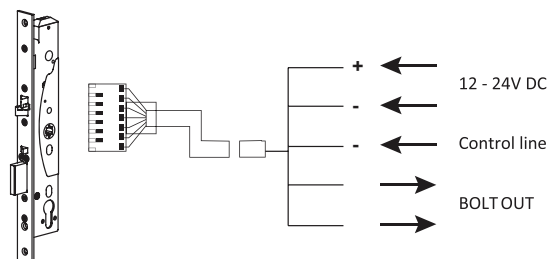
EL418

For narrow stile doors

EL518

For narrow stile doors

### Wiring



### STANDARD DELIVERY

Standard delivery includes:

- Lock case
- Fixing screws etc.
- Spindle adapters
- Installation manual

Please specify when ordering:

- Lock type
- Backset
- Forend
- Strike plate

### Recommended Accessories



EA324



EA221



EA281



CY321T



EH004

### Standards





### Fire Rated Electronics Access Control Locks

#### CF60 series

These locks can be used in Emergency Exit and Fire Rated Doors.

##### Operation

Locking the cylinder, the external follower of the lock gets blocked and the door can not be opened.

##### Panic model

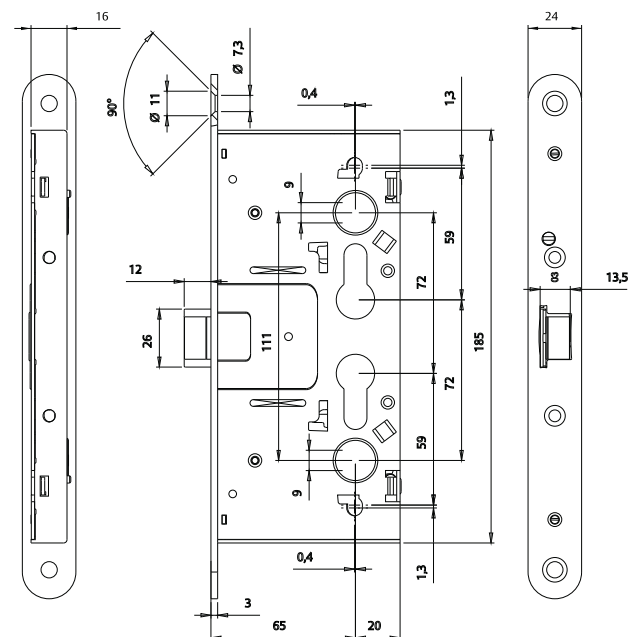
The door can always be open from inside by activating the lever or the panic exit device. With an electrical signal, the electro switch clutches the inner mechanism of the lock allowing the door to be opened from outside operating the lever. When the signal disappears, the lock becomes blocked again from outside.

##### Non panic model

With an electric signal, the electro switch clutches the inner mechanism of the lock allowing the door to be opened from inside and outside operating the lever. When the signal disappears, the lock becomes blocked again.



#### General dimensions



#### Mechanical features

- » Latch
- » Backset: 65 mm
- » Distance between axes: 72
- » Follower: 9 mm
- » Face plates: 24mm
- » Face plates: Zinc or Stainless steel

#### Electrical features

- » Voltage : 12-24Vdc
- » Current consumption: 240mA a 12Vdc (max.550mA)  
110mA a 24Vdc (max. 270mA)

#### Certificates

- EN 179:2008 Exit
- EN 1125:2008 Panic exit
- EN 1634-1 Fire resistant
- EN 12209:2004 Mechanical resistant

#### Fire Rated Electric Locks (Non Panic Function)

Description	Finish	Item Code (Square End)
CF60-Selonoid without panic function	SS	CF6SNPTRSR9ICE

#### Compulsory Items

TESA Sena Series Fire Door Handle	IS16	MSMF872IS16
Spindle adapter for Fire Rated Locks with Single Nut	-	CASQUCF50

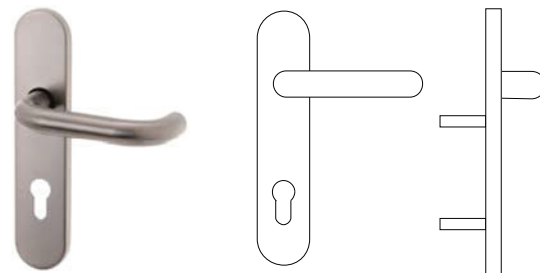
#### Fire Rated Electric Locks (Panic Function)

Description	Finish	Item Code (Square End)
CF60-Selonoid with panic function (outward opening)	SS	CF6STRSR9ICE
CF60-Selonoid with panic function (inward opening)	SS	CF6SIRSR9ICE

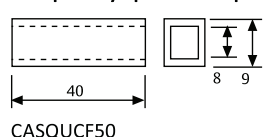
#### Compulsory Items

TESA Sena Series Fire Door Handle	IS16	MSMF872IS16
Spindle for Fire Rated Locks with double nut	-	CDCF60MAK

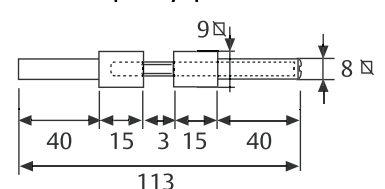
#### Compulsory Handle MSMF872IS16



#### Compulsory Spindle adapter



#### Compulsory Spindle



CDCF60MAK

Half wing electric striker, 22 mm width for rebated doors



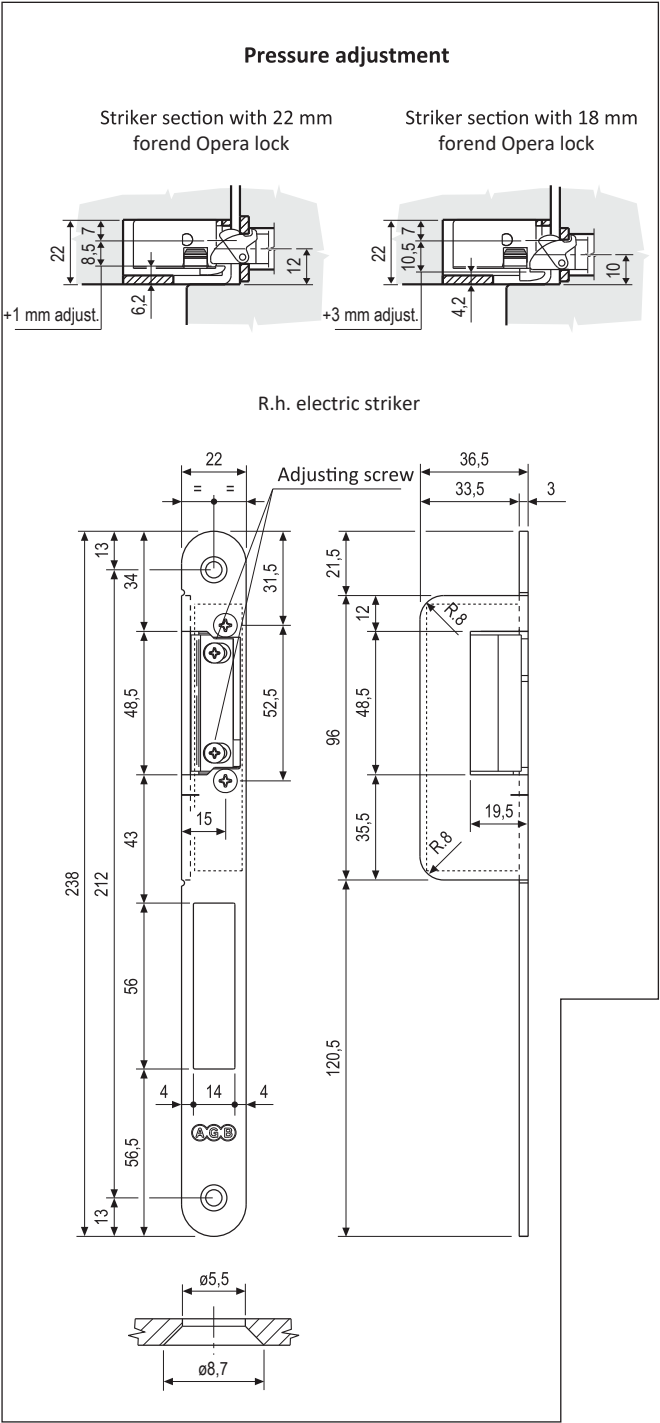
Description

Adjustable electric striker, with reduced covering wing, for rebated door. Available with or without repeater and with or without release lever.

Mounting

Execute a proper milling on the frame and fix with 4x25 mm screws.

Electric Striker, 22mm width for Sicuzrezza SL Mortice Lock					
Model Description	Width	Material	Finish	Handing	Item Code
AGB Electric Strike	22mm	Steel	Matt Chromium Plated	RH	B02601.05.34
AGB Electric Strike	22mm	Steel	Matt Chromium Plated	LH	B02602.05.34
Note: Recommend to use with AGB Sicurezza SL Locks.					



“R.h.” and “l.h.” refer to pull doors according to DIN 107 regulation. Refer to price list in force in order to check the availability of the finishes.

Without repeater:the electric striker allows the opening of the door only while receiving the pulse. When the pulse stops, the striker blocks itself even if the door was not opened.

Electronic device data table (collected at 20° C)		B026XX.05 B026XX.07
Tension	12V ±1V	
Nominal resistance	60 Ω	
DC absorption (stabilized)	200 mA	
AC absorption	130 mA	
Max latch preloading - DC (stabilized)	10N	
Max latch preloading - AC	80N	
Antiburglar resistance	3000N	