

### Standalone access control for special application Code Handle



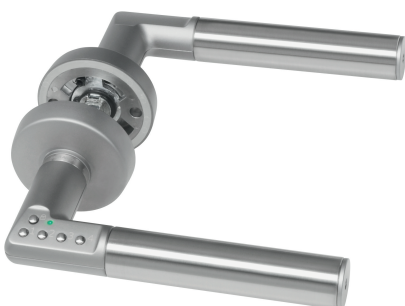
#### Easy and comfortable

CodeHandle is a set of handles with access control without any cards or keys, simple and effective. It's suitable for any kind of interior door, in residential or institutional environment where comfortable and ease of use is a priority. Code handle is the solution for most of the restricted areas: offices, warehouse, private areas, wardrobe, etc.

#### Attractive design and easy to install

As the keyboard is integrated in the handle is a more attractive option than the wall readers. Also is very easy to install: without cables, without special drills... you can install it as any other handle.

- » In doors: patented stand alone access control with code for internal door. A complete set is supplied including handles, rosettes, spindle, fixing through bolts and instructions. For 35-80 mm door thickness.
- » Fits lock cases DIN standard. 8 mm spindle.
- » One master code and up to nine different user codes.
- » Auto locking function available.
- » Two CR2, 3V lithium batteries in the outer handle.
- » Visual and acoustic feedback.
- » Easy to fit, no cables.
- » Available for right- and left hand doors.
- » Only for indoor use.
- » Material: brushed stainless steel and satin chrome zink.



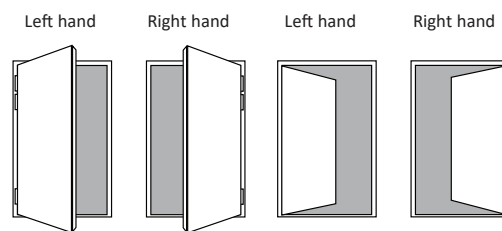
#### Normative

CE according to EN 61000-6-1, EN 61000-6-3, EN 61000-4-2, EN 61000-4-3, EN61000-4-8  
Fire certificate EN 1634

#### Function:

- » Four buttons to press a four- to six digit code to unlock and one button to lock.
- » Green light flashes and a sound is heard when the buttons are pressed for unlocking.
- » Red light flashes and a sound is heard when locking.
- » Master code and user code is programmed at installation. Can be changed unlimitedly.
- » If wrong code is pressed five times the handle is blocked for three minutes.
- » Free swing from the outside when locked, always possible to open with the handle from the inside.
- » The two batteries gives approximately 2 years.
- » Red light indicates low battery when approximately 500 operations left

#### Hand definition for Codehandle



Product code	Finish	Hand
MCHDR800CM	CM	Right
MCHIR800CM	CM	Left

Lockcase, Cylinder & Cylinders Covers order separately.