



# Linear

AUTOMATION FOR SWING GATES  
WITH LEAVES UP TO 4.5 m - 300 KG





# Linear

## Automation for swing gates with leaves up to 4.5 m - 300 kg

### ROBUST AND SIMPLE

Linear is mechanically reliable thanks to its telescopic piston transmission system. The stainless steel stem and shells in die-cast aluminium guarantee long life. The brackets do not require welding and the terminal connections make installation quick and practical.

### SMART TRADITIONAL ELECTRONICS

STARG8 control units radically simplify the installer's job, guaranteeing high levels of performance in terms of safety, time and speed of installation. A single programming method speeds up the activation of the automatic devices and managing maintenance operations becomes simple and practical.

#### STARG8

1 control unit 24 Vdc and 1 control unit 230 Vac, for all gate motors.

Practical regulation using trimmers, self-learning gate travel programming using a single key, diagnostic LEDs and dip-switches for setting operating modes. Management of slow-down options, speed regulation and obstacle control in all versions. Plastic cover with explanatory labels and spare fuses.



#### 1. STRONG MECHANICS

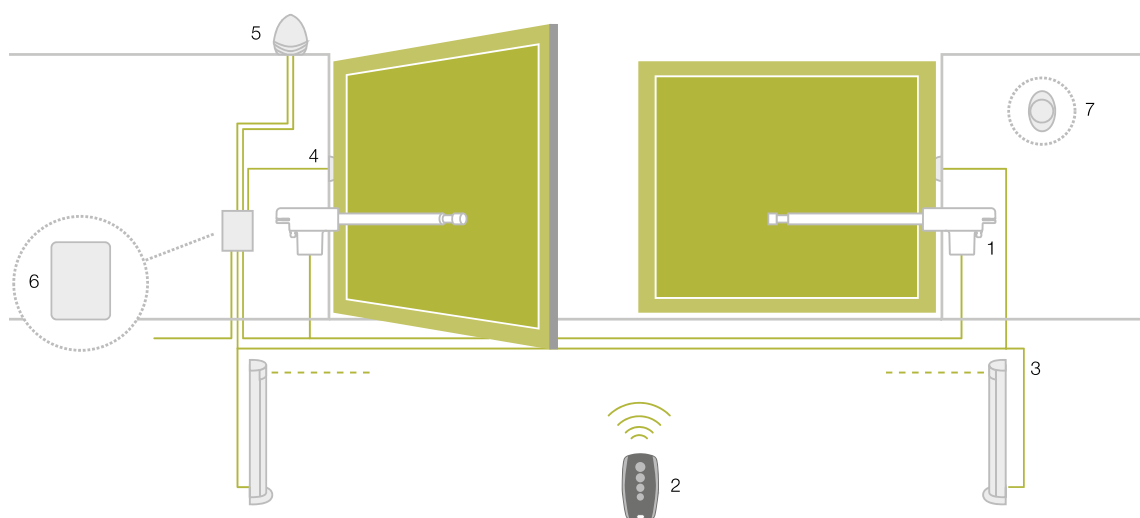
Stainless steel stem coupled with circular cross-section extruded solid element to ensure strength over time

#### 2. FASTENING BRACKETS

Rapid installation thanks to brackets that do not require welding

#### 3. CLAMP CONNECTIONS

Quick wiring thanks to clamp connections

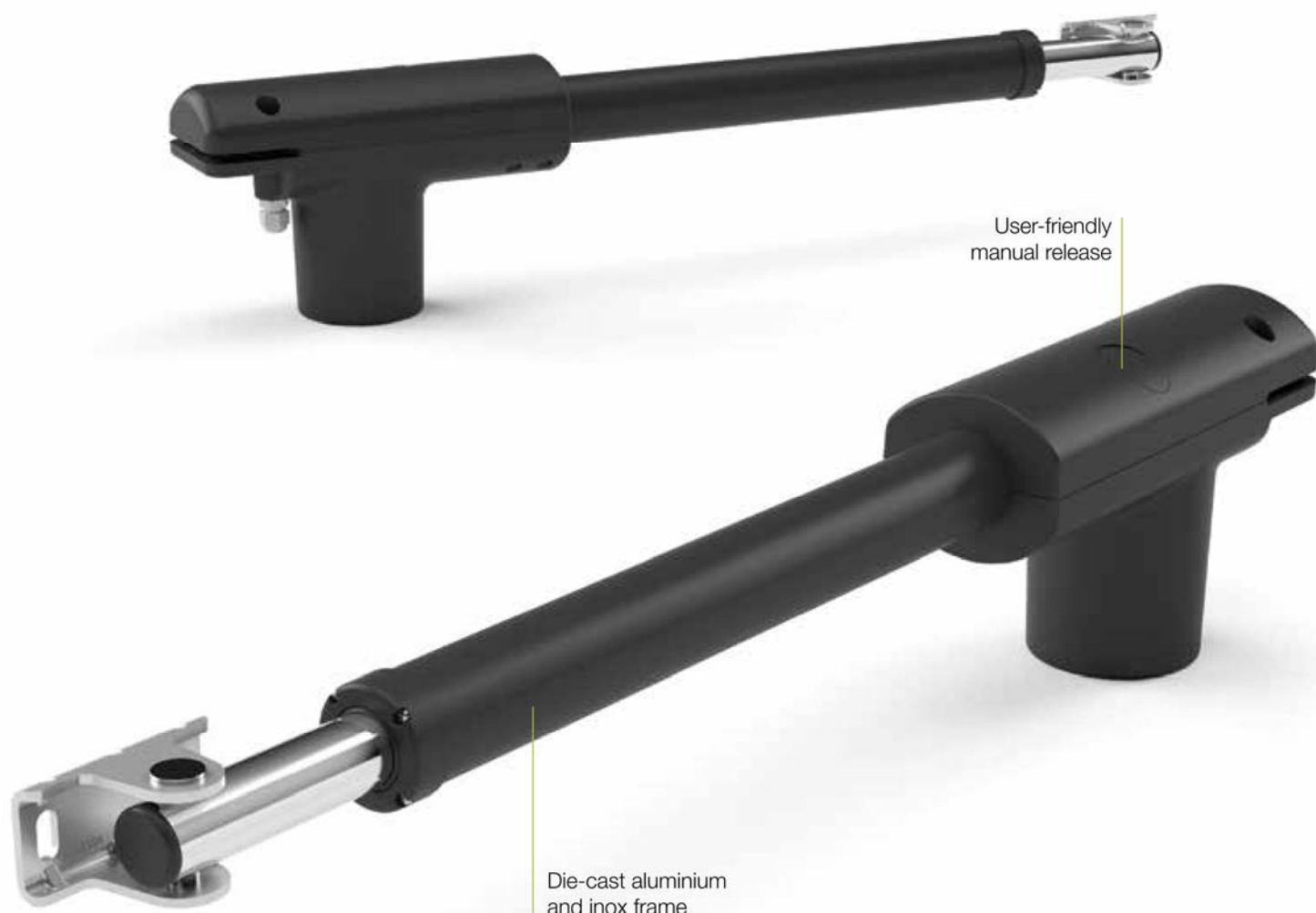


#### BASIC INSTALLATION

1. Operator Linear
2. Transmitter
3. Photocells mounted on posts
4. Photocells
5. Flashing light
6. Control unit
7. Key or digital switch

READY FOR




**TECHNICAL DATA**

Code		LINEAR400230	LINEAR40024	LINEAR500230	LINEAR50024
Motor supply	(Vac 50 Hz / Vdc)	230 Vac	24 Vdc	230 Vac	24 Vdc
Maximum power draw	(W)	340	120	340	120
Speed	(m/s)	0.016	0.014	0.016	0.014
Force max	(N)	2000	1800	2000	1800
Working cycle	(%)	30	90	30	90
Travel	(mm)	400		500	
Protection level	(IP)	54			
Operating temperature	(°C)	-20 ÷ +55			
Automation weight	(kg)	6	5.5	6	5.5
Operator dimensions	(mm)	700x100x177 h		800x100x177 h	

## LINEAR

Code	Motor	Travel	Fixing kit	Wing max dimensions
Linear 400230	230 Vac	400	•	3 m - 300 kg
Linear 500230	230 Vac	500	•	4.5 m - 300 kg
Linear 40024	24 Vdc	400	•	3 m - 300 kg
Linear 50024	24 Vdc	500	•	4.5 m - 300 kg

Mechanical limit switch not included

## LINEAR KIT

Code	LINEAR 500230	LINEAR 50024	LINEAR 400230	LINEAR 40024	STARG8 AC BOX	STARG8 24 BOX	STYLO 4K	IDEA PLUS	VIKY 30	TAB	Wing max dimensions
Lineark400230			• (2)		•		• (2)	•	•	•	3 m - 300 kg
Lineark400230LT			• (2)		•		• (1)		•		3 m - 300 kg
Lineark500230	• (2)				•		• (2)	•	•	•	4.5 m - 300 kg
Lineark500230LT	• (2)				•		• (1)		•		4.5 m - 300 kg
Lineark40024				• (2)		•	• (2)	•	•	•	3 m - 300 kg
Lineark40024LT				• (2)		•	• (1)		•		3 m - 300 kg
Lineark50024		• (2)				•	• (2)	•	•	•	4.5 m - 300 kg
Lineark50024LT		• (2)				•	• (1)		•		4.5 m - 300 kg

Also available in 110 V / 60 Hz version



LINEAR



STARG8 BOX



STYLO 4K



IDEA PLUS



VIKY 30



TAB





**LOCK H0**  
Horizontal  
electro lock 12 V



**LOCK VE**  
Vertical  
electro lock 12 V



**BAT M 016**  
24 V 1.6 Ah battery



**BAT K3**  
Battery charge card  
for BAT M 016

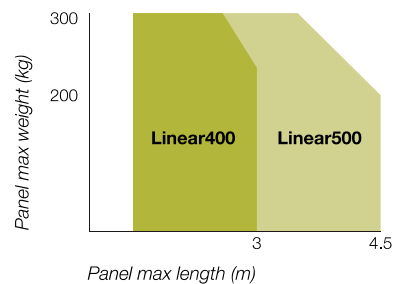
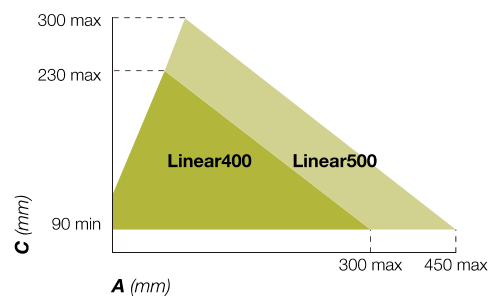
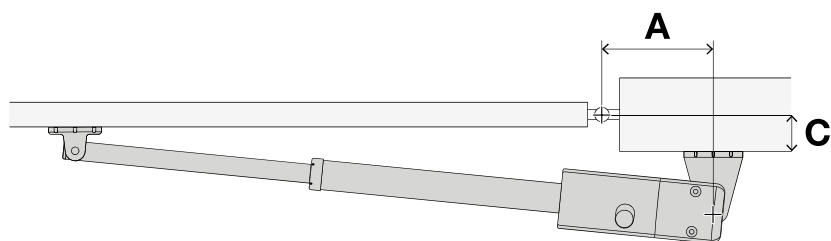


**STARG8 24**  
24 Vdc spare control unit



**STARG8 AC**  
230 Vac spare control unit

LIMITS OF USE FOR THE PRODUCT







# Jet

AUTOMATION FOR SWING GATES  
WITH LEAVES UP TO 3 m - 600 KG



# Jet

## Automation for swing gates with leaves up to 3 m - 600 kg

### DESIGN AND TECHNOLOGY

Designed to enhance any sort of gate, it fits into any setting. The elegant, wrap-around line of the two die cast aluminium shells makes Jet an original example of Italian-made creativity.

**Thanks to the extractable connector, installation and maintenance are quick and easy.**

The capacitor is built into the reduction gear and the regulating limit switches allow quick adjustment of travel.

**The heart of Jet is the mechanical transmission, designed without cutting any corners to ensure the utmost reliability and to allow a range of use that's wider than the standard.**

All of the components turn on ball bearings which eliminate friction and noise. The use of steel and bronze ensures duration and reliability even in severe conditions. The manual-release handle is made of die cast aluminium with personalized key and ABS lock cover. It is located on the upperpart of the reduction gear to allow immediate, practical use with minimum effort.

### SMART TRADITIONAL ELECTRONICS

STARG8 control units radically simplify the installer's job, guaranteeing high levels of performance in terms of safety, time and speed of installation.

A single programming method speeds up the activation of the automatic devices and managing maintenance operations becomes simple and practical.

#### STARG8

1 control unit 24 Vdc and 1 control unit 230 Vac, for all gate motors.

Practical regulation using trimmers, self-learning gate travel programming using a single key, diagnostic LEDs and dip-switches for setting operating modes. Management of slow-down options, speed regulation and obstacle control in all versions. Plastic cover with explanatory labels and spare fuses.



#### 1. EXTRACTABLE CONNECTOR

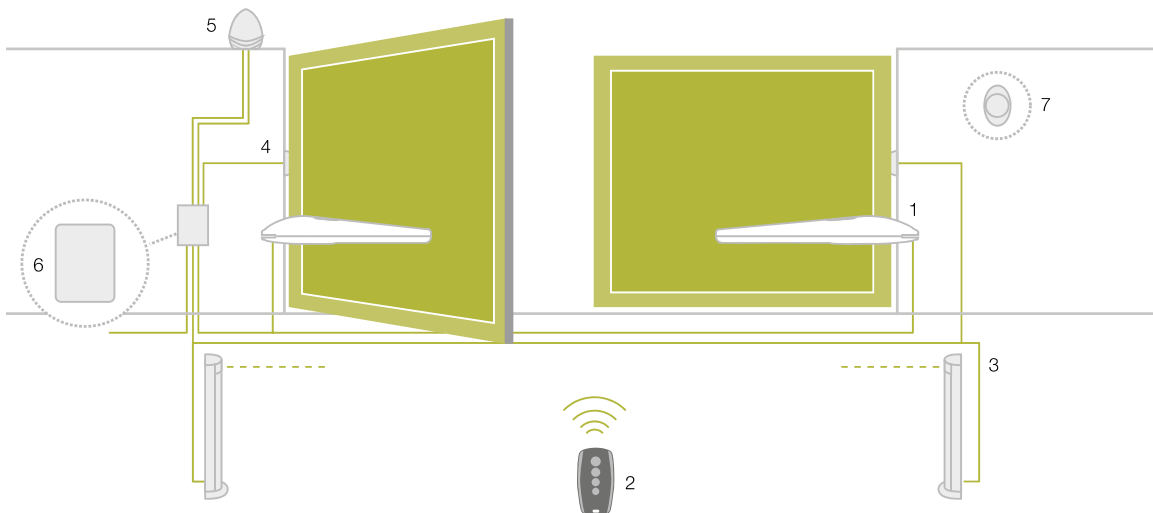
It simplifies installation and maintenance operations

#### 2. STRONG MECHANICAL TRANSMISSION

Made of steel and bronze, for the utmost duration and reliability

#### 3. MANUAL-RELEASE HANDLE

Is made of die cast aluminium with personalized



#### BASIC INSTALLATION

1. Operator Jet
2. Transmitter
3. Photocells mounted on posts
4. Photocells
5. Flashing light
6. Control unit
7. Key or digital switch

READY FOR




**TECHNICAL DATA**

Code		JET 230 F	JET 230 S	JET 24
Motor supply	(Vac 50 Hz / Vdc)	230 Vac		24 Vdc
Maximum power draw	(W)	200	170	120
Speed	(m/s)	0.016	0.010	0.020
Force max	(N)	2000		
Working cycle	(%)	30		90
Travel	(mm)	360		
Protection level	(IP)	44		
Operating temperature	(°C)	-20 ÷ +55		
Automation weight	(kg)	8		7
Operator dimensions	(mm)	820x100x110 h		



## JET

Code	Motor	Mechanical stop	Fixing kit	Protective brushes	Wing max dimensions
Jet 230 F	230 Vac	• (1)	•		3 m - 600 kg
Jet 230 S	230 Vac	• (1)	•		3 m - 600 kg
Jet 24	24 Vdc	• (1)	•		3 m - 600 kg
Jet 230 F TOP	230 Vac	• (2)	•	•	3 m - 600 kg
Jet 230 S TOP	230 Vac	• (2)	•	•	3 m - 600 kg
Jet 24 TOP	24 Vdc	• (2)	•	•	3 m - 600 kg

## JET KIT

Code	JET 230	JET 24	STARG8 AC BOX	STARG8 24 BOX	STYLO 4K	IDEA PLUS	VIKY 30	NOVO LT 24 PLUS	NOVO PH 180	TAB	Wing max dimensions
Jet Kit 230	• (2)		•		• (2)	•	•			•	3 m - 600 kg
Jet Kit 230 LT	• (2)		•		• (1)		•				3 m - 600 kg
Jet Kit 24		• (2)		•	• (2)	•	•			•	3 m - 600 kg
Jet Kit 24 LT		• (2)		•	• (1)		•				3 m - 600 kg
Jet Kit 24 NV		• (2)		•	• (2)			•	•	•	3 m - 600 kg

24 V version also available for markets with 110 V / 60 Hz mains power supply



JET



STARG8 BOX



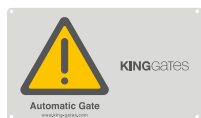
STYLO 4K



IDEA PLUS



VIKY 30



TAB



NOVO LT 24 PLUS



NOVO PH 180

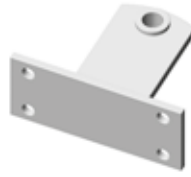




**STP**  
Rear screw-on  
bracket (pcs./package 2)



**STP 02**  
Rear vertical screw-on  
bracket (pcs./package 2)



**STA**  
Front screw-on  
bracket (pcs./package 2)



**STL**  
Rear bracket,  
length = 220 mm  
(pcs./package 2)



**BK 01**  
Mechanical limit switch  
(pcs./package 2)



**BK 02 TOP**  
Mechanical limit switch  
for Jet Top (pcs./package 2)



**LOCK HO**  
Horizontal  
electro lock 12 V



**LOCK VE**  
Vertical  
electro lock 12 V



**BAT M 016**  
24 V 1.6 Ah battery



**BAT K3**  
Battery charge card  
for BAT M 016



**STARG8 24**  
24 Vdc spare control unit



**STARG8 AC**  
230 Vac spare control unit

LIMITS OF USE FOR THE PRODUCT

